

# A Future Kirkby Town Centre?

An Initial Proposal from Vision Kirkby



**“Never doubt that a small group of thoughtful, committed citizens can change the world. Indeed, it’s the only thing that ever has.”**

Margaret Mead - Cultural anthropologist and a key participant at UN Habitat I, the first UN forum on human settlements.



# 3D Model

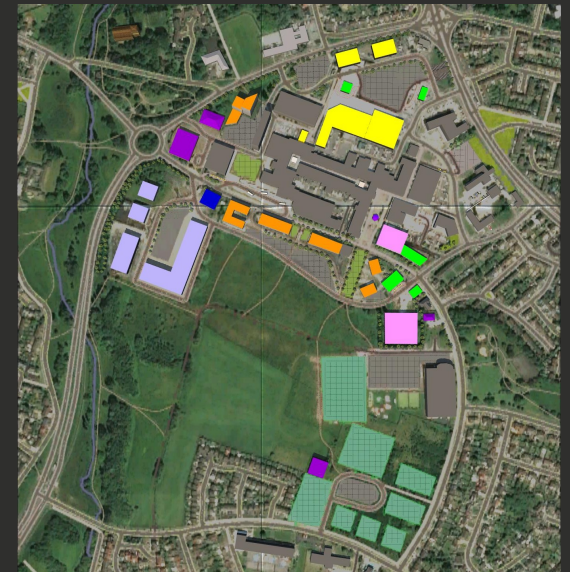
How did we get here?

We held two "Kirkby Forum" - consultation events and engaged via social media to collate ideas and develop a conceptual plan for Kirkby Town Centre - reflecting the wishes and desires of residents for the heart of their town.

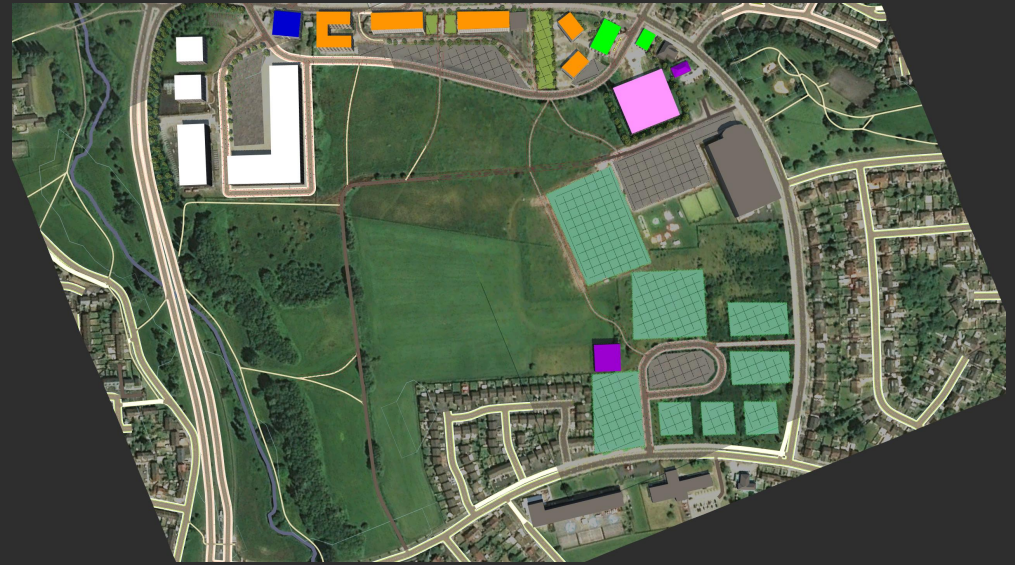
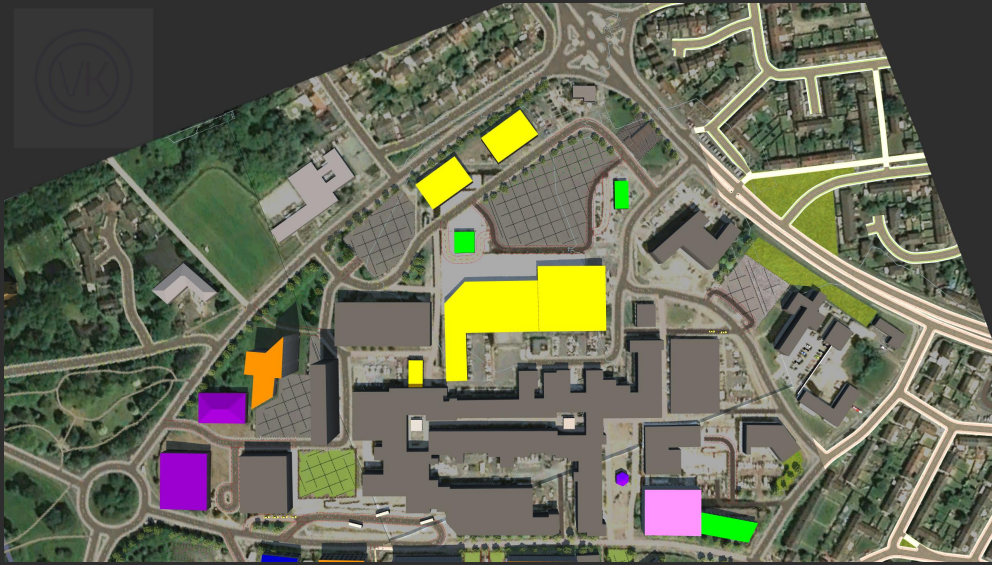


# Key

- **Yellow:** Retail
- **Orange:** Mixed-use retail, office, residential
- **Pink:** entertainment
- **Bright green:** Restaurants, bars and pubs
- **Dark green:** Community sports grounds
- **Dark purple:** Civic and community facilities
- **Light purple:** Education, training, technology
- **Dark blue:** Business start-up hub







## Two distinct areas

- North of Cherryfield Drive
- South of Cherryfield Drive





# North of Cherryfield Drive

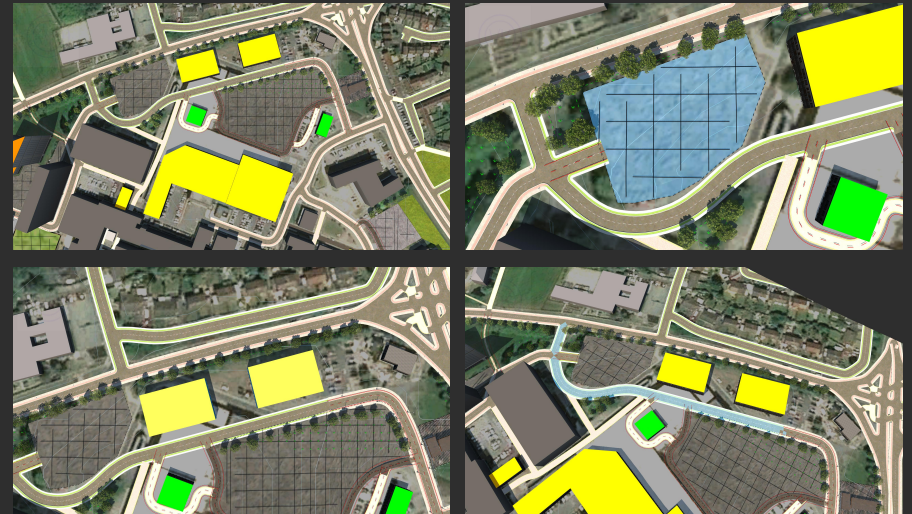




# New Retail

Proposed amendments:

- Retain & Renew car park facing C of E School.
- Relocate additional retail units and associated service yard to back onto Hall Lane
- Retain access on rerouted Telegraph Way



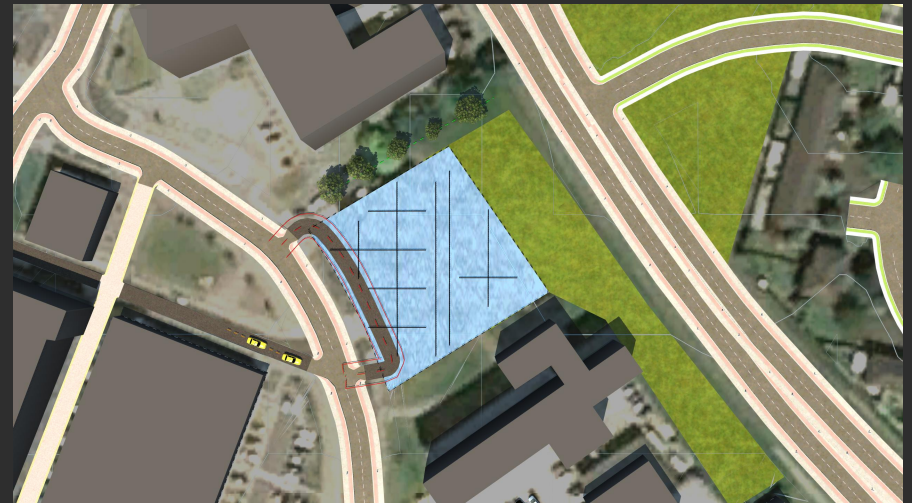
## Cinema & Leisure

- 6-screen cinema
- Selection of restaurants and bars



## Market

- Reintroduce a Kirkby Outdoor Market
- Provide low-cost, low-maintenance space for temporary market stalls
- Proposed long term use for site of current temporary car park former Clinic/LINK centre

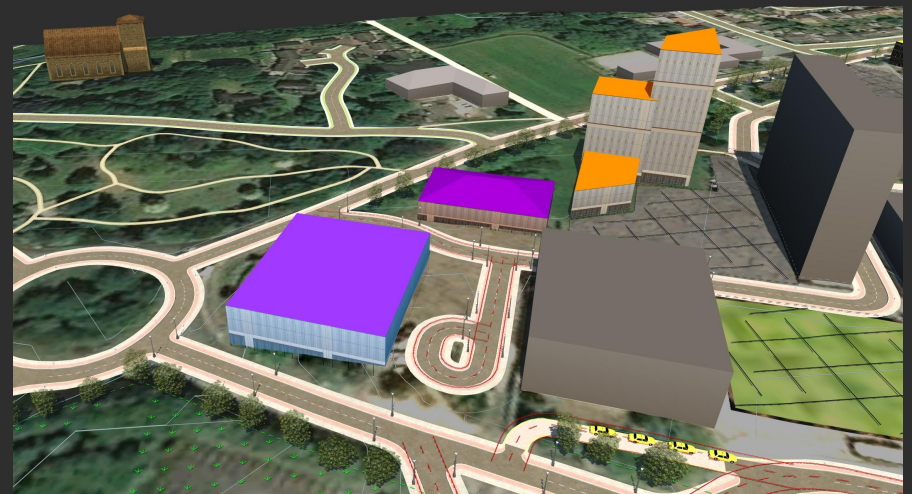




# New Civic Quarter

Left to right:

- Kirkby Town Hall
- Kirkby Community Centre
- Mixed-use; retail, office, residential





An aerial photograph of a development site, overlaid with various colored shapes representing buildings or lots. The site is bounded by a road at the top and another road at the bottom. A large green field occupies the central-left portion. To the right, there are several green rectangular areas with a grid pattern, a purple square, and a large purple rectangle. At the top, there are orange and blue rectangular shapes. A grey building footprint is visible on the right side. A road with a grid pattern is visible in the upper right. A residential area is visible on the right side of the image.

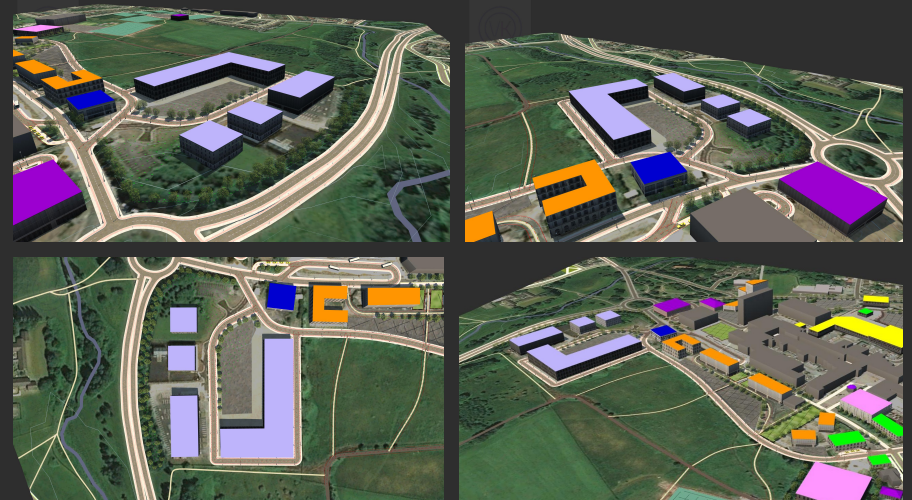
# South of Cherryfield Drive





## College Site

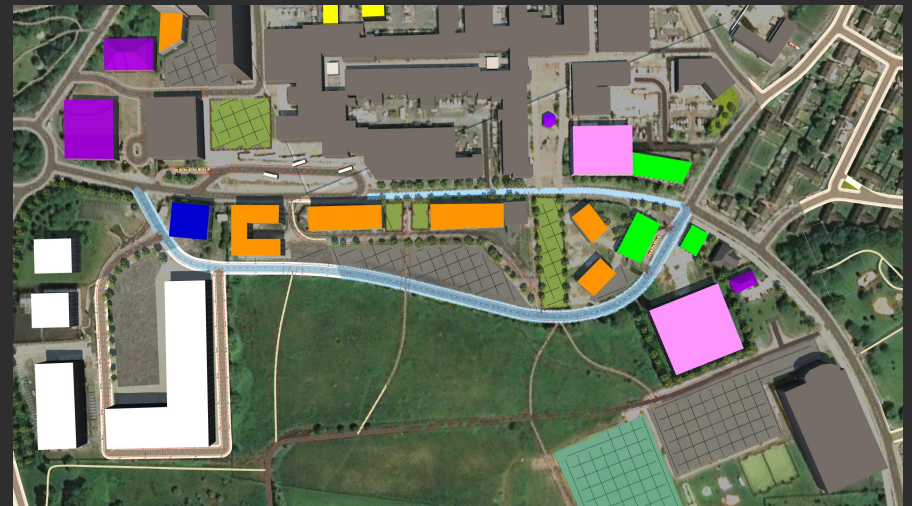
- Technology training hub
- Catering college
- Sports technology training centre
- Business start-up/innovation hub
- Flexible office/work spaces



## Pedestrianise Cherryfield Drive and introduce New Cherryfield Crescent

Introduce New Cherryfield Crescent allowing for partial pedestrianisation of Cherryfield Drive.

Enhancing safety for town centre visitors whilst increasing potential footfall.



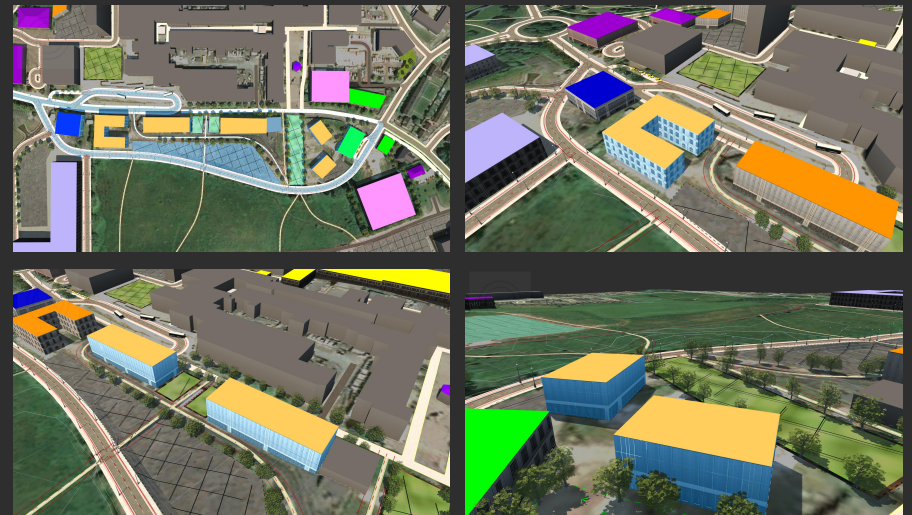
# New Cherryfield Crescent

Left to right:

- Business start-up/innovation hub
- Hotel
- 2No. Mixed-use; retail, residential
- Existing Lloyds Bank Building
- 2No. Mixed-use; retail, residential
- Family pub

Central:

- Parking

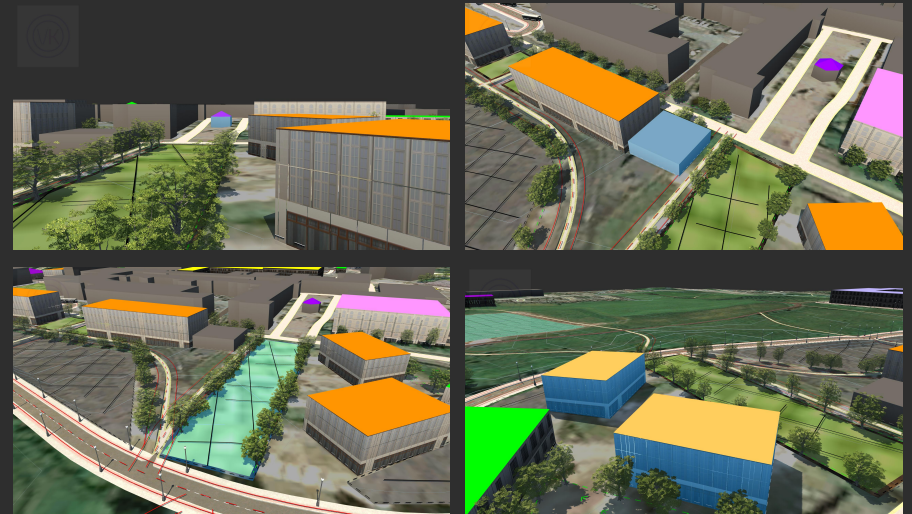




# Newtown Gardens

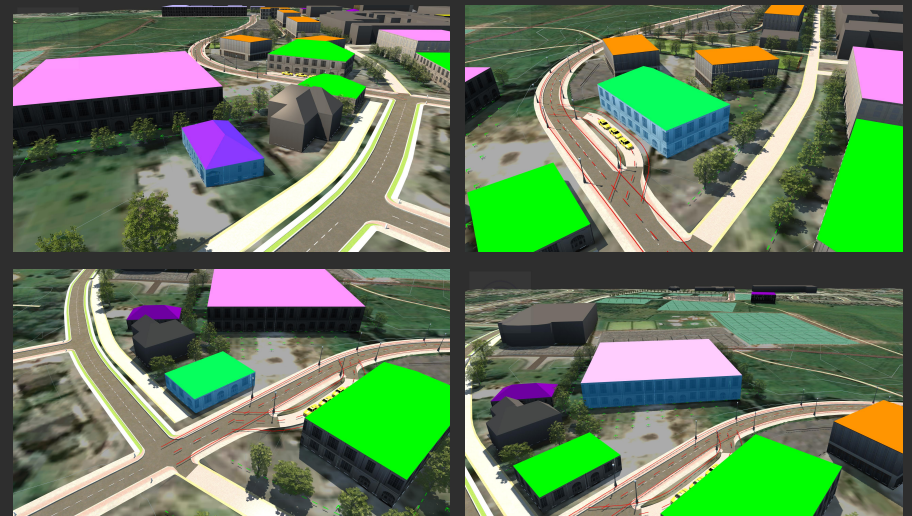
Whilst there are mixed feelings about the elephant in a boat sculpture, the iron casting of a tree from outside of the town is widely disliked.

- Replace tree with a useful focal point which the residents of Kirkby can be proud of
- Extend Newtown Gardens through - linking the Town Centre with Kirkby Valley Park



## New Leisure/Community Proposals

- New family pub
- New coffeehouse or food venue
- New bingo hall
- Former RSPCA building brought back into use

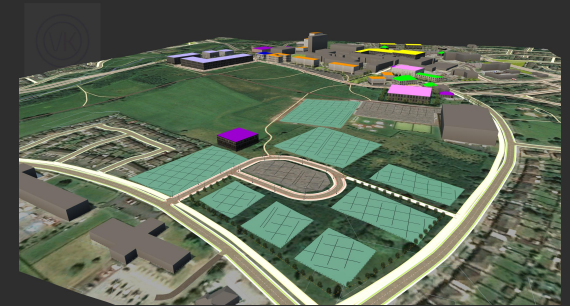


# Kirkby Community Sports Centre

On the former All Saints school site. Featuring:

- Sport pitches
- A cafe/bar
- Changing facilities
- Secure storage facilities for local clubs

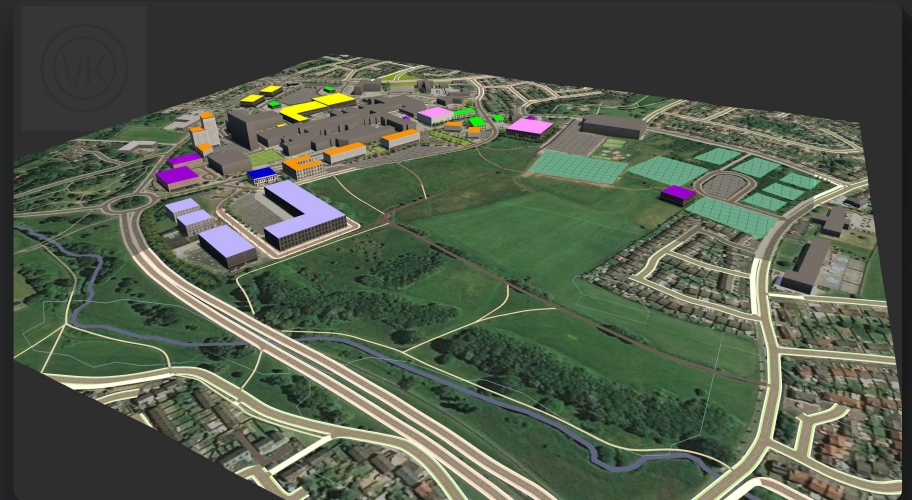
Any development should aim to retain a large portion of the wooded areas for biodiversity/ educational purposes - areas shown are only indicative.



## Kirkby Valley Park

Retained green space! Otherwise earmarked for residential development.

To the tune of around **31 Acres** and for the enjoyment of all!



## Further Reading

### Kirkby Town Centre - Housing Report

Refer to our latest housing report for information on our initial proposals for providing affordable, suitably-sized homes within and around Kirkby Town Centre to satisfy local housing need.

Available at [www.visionkirkby.org.uk](http://www.visionkirkby.org.uk)





**Let us know your thoughts or get involved**

Visit [www.visionkirkby.org.uk](http://www.visionkirkby.org.uk) or find us on Facebook or Twitter

